



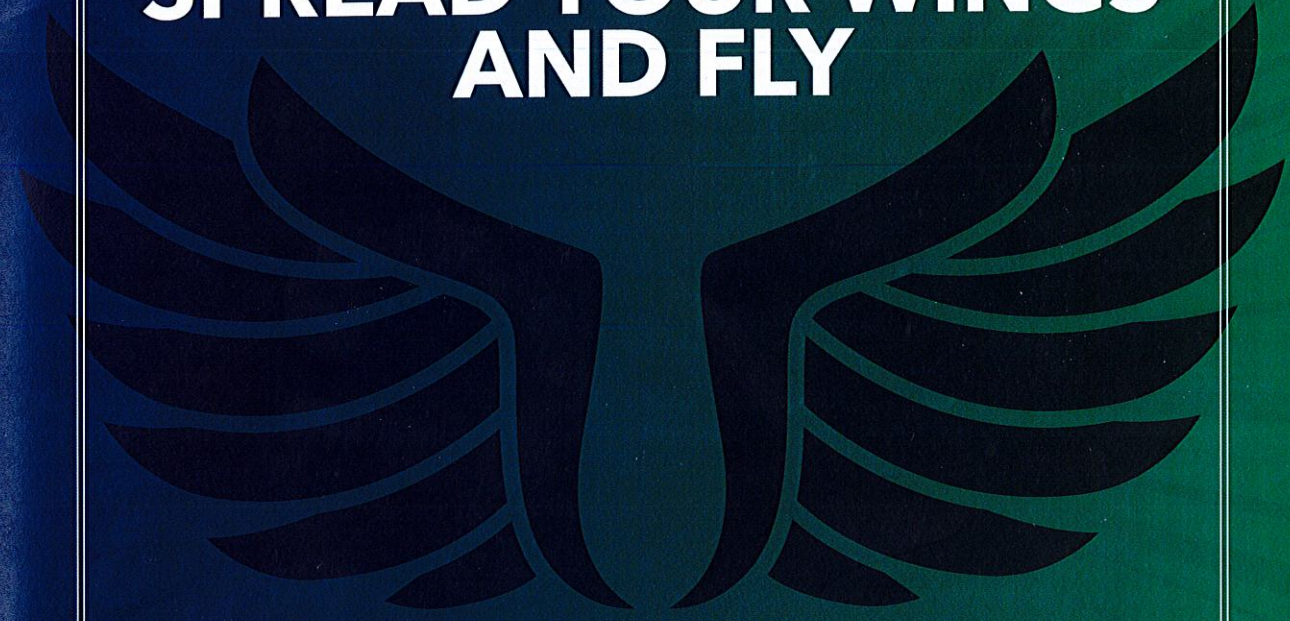
FLORIDA  
GULF COAST  
UNIVERSITY

[fgcu.edu](http://fgcu.edu)

*This material was produced in part under Grant No. 14107033-070120-3-18 provided by the Florida Center for Students with Unique Abilities at the University of Central Florida, with funding made available by The Florida Postsecondary Comprehensive Transition Program Act (Fla. Statutes 1004.6495). The views expressed herein do not necessarily represent the positions or policies of UCF or the State of Florida. No official endorsement by the Florida Board of Governors of the State University System or by the Florida Department of Education of any product, commodity, service or enterprise mentioned in this publication is intended or should be inferred. This product is public domain. Authorization to reproduce it in whole or in part is granted.*

FLORIDA GULF COAST UNIVERSITY

**SPREAD YOUR WINGS  
AND FLY**



**SOARING EAGLE  
ACADEMY**

HIGHER EDUCATION FOR GREATER INDEPENDENCE





**WELCOME**

Introducing **Soaring Eagle Academy**, Southwest Florida's first university program for adults with intellectual disabilities. This life-changing program will benefit participants, the Southwest Florida workforce and all those who encounter the students.



The FGCU **Soaring Eagle Academy** is a college program for adults with intellectual disabilities. The program allows students to earn a credential in Community Employment, which will be offered in an inclusive college environment on the Florida Gulf Coast University campus. Students will also take part in college activities and events while enrolled in the program.





# EXPLORATION

## ► Courses during the initial semesters

focus on readiness skills (effective learning, social skills, learning with technology) and exploration (discovering careers, getting around the community, professional career development).

## ► Each semester

features field experiences or internships of increasing intensity and individualization based on a student's aptitudes and interest as determined through university-sponsored assessments, observation and practical experience in work environments.

**39**  
CREDIT HOURS  
TAKEN OVER SIX  
CONSECUTIVE  
SEMESTERS.

## THE SUPPORT

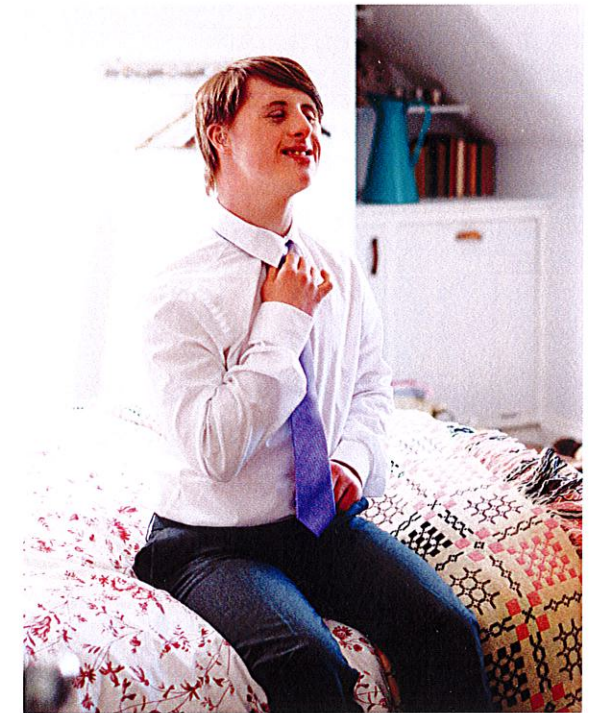
Students will be supported by mentors who will help them engage in the life of the university as well as a faculty advisor who will help guide them through their studies. This ensures students receive individualized, hands-on support and guidance.

## THE EXPERIENCE

Florida Gulf Coast University, ranked among the safest campuses in the nation, is also one that offers a wealth of activities, programs and other cultural opportunities the students are sure to enjoy. They will have the chance to join clubs, cheer on the university's athletic teams, explore the boardwalks that meander through beautiful natural settings, hang out at Starbucks and immerse themselves in the lively campus culture.

## THE OUTCOME

Program completers will be equipped with skills that will enable them to be more independent when it comes to employment and quite possibly when it comes to living arrangements as well. Most will be qualified for competitive employment, receiving the same pay and benefits as their co-workers without disabilities. Depending on the severity of their disabilities, some graduates may need extended support to hold jobs in typical community environments.







# INDEPENDENCE



## ELIGIBILITY

Soaring Eagle Academy students will be those eager to increase their education and independence and who possess talents or experiences that enable them to enhance the culture, diversity and educational experiences of the FGCU community. Students will strive to improve themselves, be enthusiastic and serve as positive ambassadors for FGCU.

## TUITION

Tuition and fees are the same as for other undergraduate students at FGCU.

## FINANCIAL AID

- ▶ Scholarships may be available.
- ▶ Students are eligible to receive Florida Postsecondary Comprehensive Transition Program Scholarships, currently funded at \$7,000 annually.
- ▶ They may also apply for Pell Grants, Federal Supplemental Educational Opportunity Grants and Federal Work Study programs based on financial need.\*\*

*\*\*Contingent on being designated a Comprehensive Transition Program (approval pending)*



## WHEN IT STARTS

The first class will begin in August 2021 with 8 to 10 students.

**WANT TO KNOW MORE?** Contact the Soaring Eagle Academy at **239-745-4708** or **sea@fgcu.edu** or check out the website at **fgcu.edu/soaringeagleacademy**.